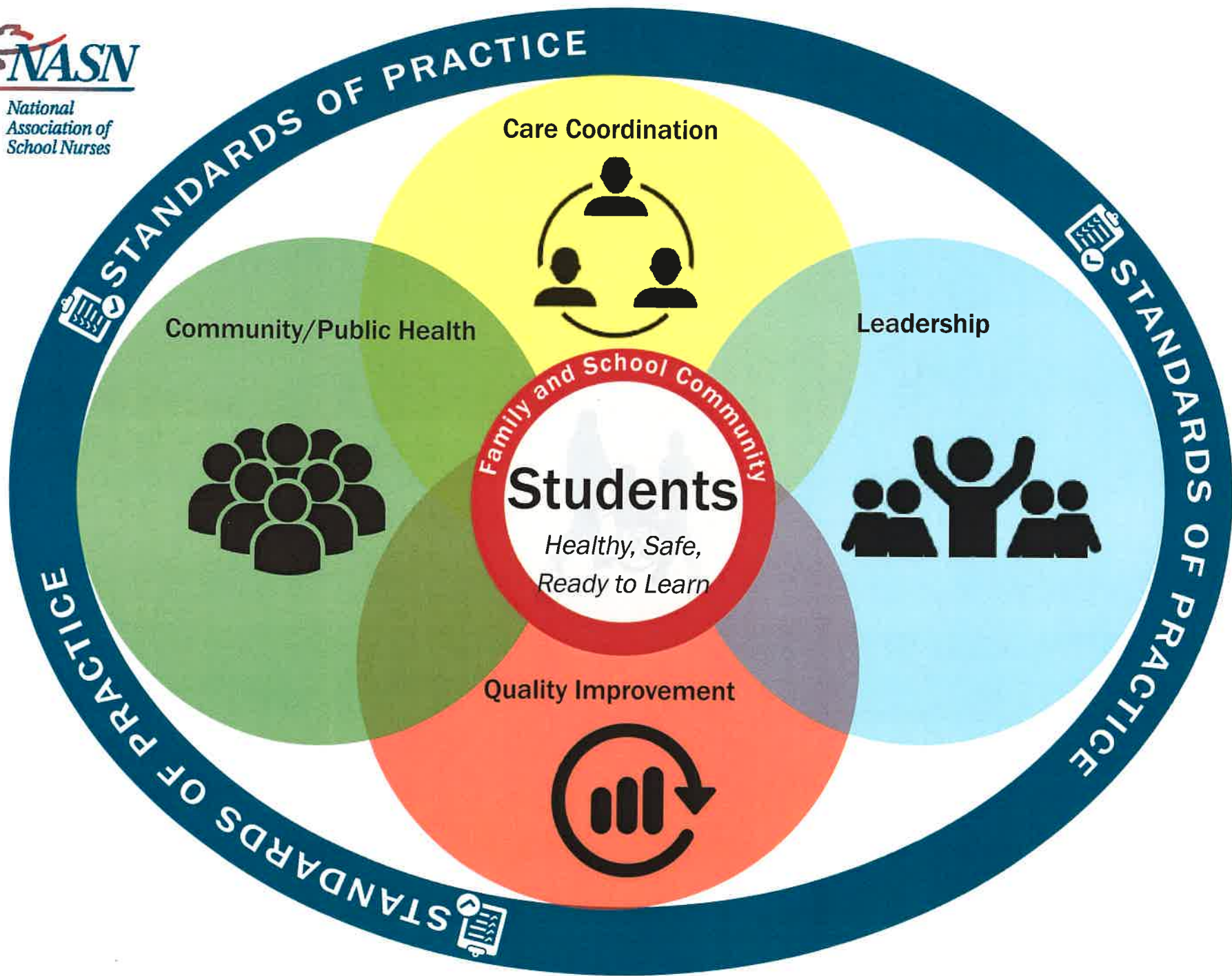


Framework for 21st Century School Nursing PracticeTM



National Association of School Nurses



Framework for 21st Century School Nursing PracticeTM

NASN's *Framework for 21st Century School Nursing PracticeTM* (the *Framework*) provides structure and focus for the key principles and components of current day, evidence-based school nursing practice. It is aligned with the Whole School, Whole Community, Whole Child model that calls for a collaborative approach to learning and health (ASCD & CDC, 2014). Central to the *Framework* is student-centered nursing care that occurs within the context of the students' family and school community. Surrounding the students, family, and school community are the non-hierarchical, overlapping key principles of *Care Coordination*, *Leadership*, *Quality Improvement*, and *Community/Public Health*. These principles are surrounded by the fifth principle, *Standards of Practice*, which is foundational for evidence-based, clinically competent, quality care. School nurses daily use the skills outlined in the practice components of each principle to help students be healthy, safe, and ready to learn.



Standards of Practice

- Clinical Competence
- Clinical Guidelines
- Code of Ethics
- Critical Thinking
- Evidence-based Practice
- NASN Position Statements
- Nurse Practice Acts
- Scope and Standards of Practice



Care Coordination

- Case Management
- Chronic Disease Management
- Collaborative Communication
- Direct Care
- Education
- Interdisciplinary Teams
- Motivational Interviewing/ Counseling
- Nursing Delegation
- Student Care Plans
- Student-centered Care
- Student Self-empowerment
- Transition Planning



Leadership

- Advocacy
- Change Agents
- Education Reform
- Funding and Reimbursement
- Healthcare Reform
- Lifelong Learner
- Models of Practice
- Technology
- Policy Development and Implementation
- Professionalism
- Systems-level Leadership



Quality Improvement

- Continuous Quality Improvement
- Documentation/Data Collection
- Evaluation
- Meaningful Health/Academic Outcomes
- Performance Appraisal
- Research
- Uniform Data Set



Community/Public Health

- Access to Care
- Cultural Competency
- Disease Prevention
- Environmental Health
- Health Education
- Health Equity
- Healthy People 2020
- Health Promotion
- Outreach
- Population-based Care
- Risk Reduction
- Screenings/Referral/Follow-up
- Social Determinants of Health
- Surveillance

ASCD & CDC. (2014). *Whole school whole community whole child: A collaborative approach to learning and health*. Retrieved from <http://www.ascd.org/ASCD/pdf/siteASCD/publications/wholechild/wsc-a-collaborative-approach.pdf>