

What Wisconsin School Nurses Need to Know About Wisconsin Health Services

Louise Wilson, MS, BSN, RN, LSN, NCSN
School Nursing/Health Services Consultant
WASN Conference 2023



We will...

Explore school health services data from 2021/2022

- ✓ **Review school nurse demographic data**
- ✓ **Review data from Wisconsin's voluntary 2021/22 School Health Services Survey**

Share key Department of Public Instruction updates and information

Discuss what are and will be the driving forces of school health services in Wisconsin and beyond

Celebrate our accomplishments!

Data from 2021/2022*

- ❑ **421 Wisconsin public school districts**
- ❑ **829,143 public school students**
- ❑ **666 Total number school nurses***
 - **446 fulltime**
 - **220 parttime**
- ❑ **5 CESAs provide school nursing services**
- ❑ **2 State Schools provide residential school nursing services (WCBVI and WSD)**

* [As reported by individual school districts](#)



Data from 2021/2022*

- ❑ **560.61 Total number school nurse FTEs**
- ❑ **1481:1 Student to School nurse FTE ratio**
- ❑ **1244:1 Student to School nurse ratio**



* [As reported by individual school districts](#)

What About Private School Students?

- ❑ ~795 private schools
- ❑ ?? School Nurse FTE's
- ❑ ?? private school students



Student Health Services Staffing

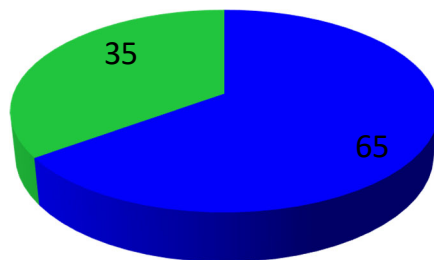
*It is the position of the National Association of School Nurses (NASN) that all students should have **access to school nursing care by a registered, professional school nurse all day, every day.** For students who face barriers to accessing healthcare, especially those living in predominantly low-income, rural and minority communities, a school nurse may serve as their only regular healthcare provider.*

School nurses provide students, staff, and school communities with quality healthcare that is critical for health promotion, disease prevention, health maintenance, and health equity .

NASN 2021

Access to School Nurse

- 272 out of 421 Wisconsin school districts reported school nurse FTEs
- 3 district charter schools report school nurse FTEs
- 3 CCDEBs report school nurse services



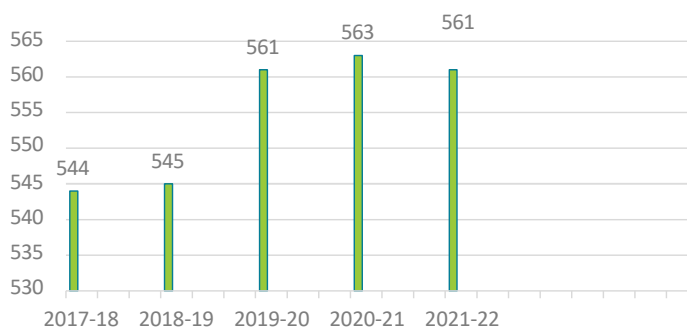
- Districts reporting School Nurse FTEs
- Districts reporting no School Nurse FTEs

[\(2021/22 Public All Staff Report\)](#)

Unknown how many districts or students have access via a CESA or LPHD school nurse
5 CESAs provide school nurse services

Historical Data

Number of School Nurse FTE's By Year



Contract and Salary*

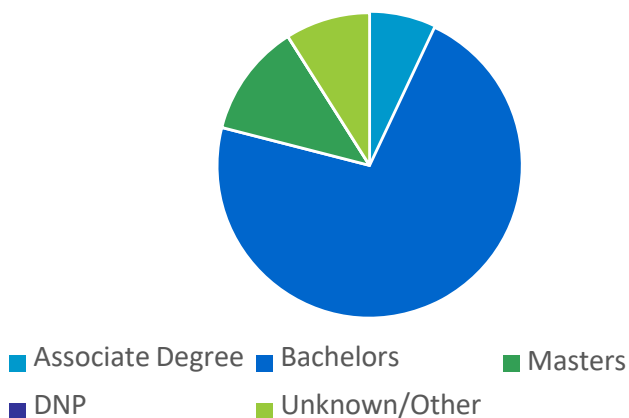
- ❑ **0.03 Lowest FTE**
- ❑ **28 districts contracted for less than 1 day per week**
- ❑ **Contracts ranged 2-261 days**
- ❑ **200-day contract most common**
- ❑ **Salaries range**
 - **\$1,000 for 15 days**
 - **\$104,000 200+ days**



* [As reported by individual school districts](#)

Wisconsin Public School Nurses Demographics

School Nurse Educational degree (percentages)



45 ADN
 480 BSN
 79 Masters
 2 DNP
 26 Other
 34 Unknown

Source [Public All Staff Report](#)

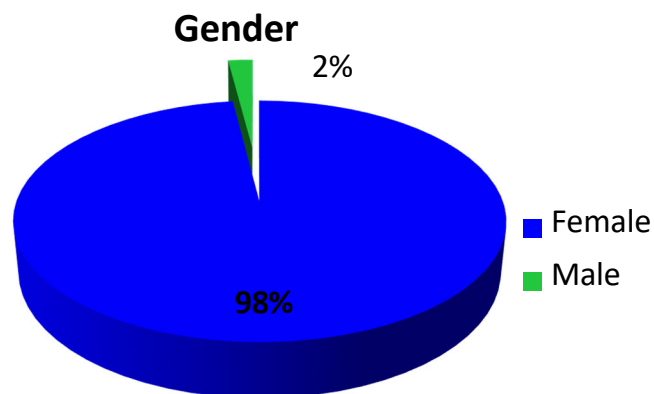


**32 Wisconsin School Nurses
licensed by the Department of
Public Instruction**

Licensed School Nurse LSN

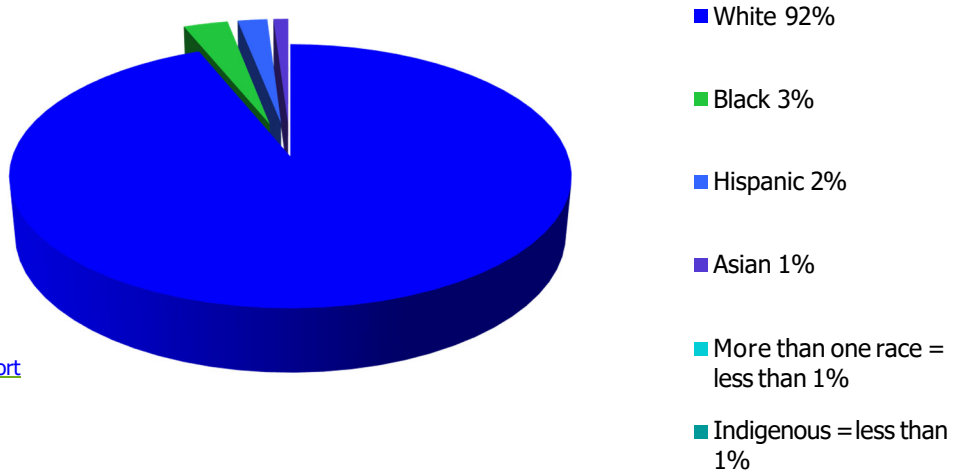
Source [Public All Staff Report](#)

Wisconsin School Nurse Demographics



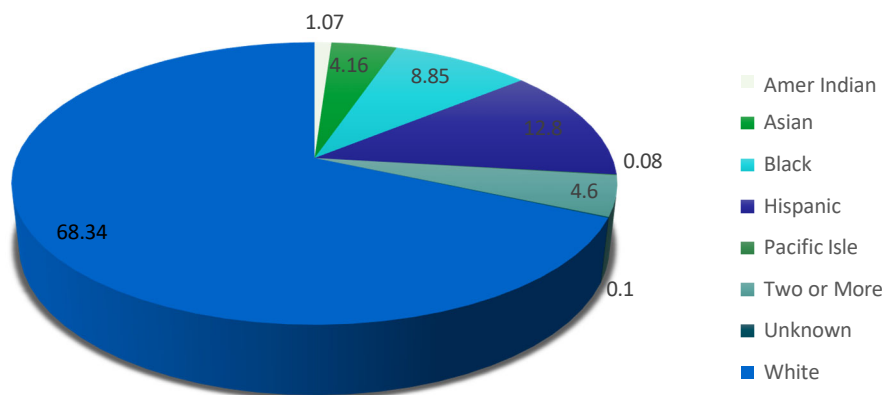
Source [Public All Staff Report](#)

Wisconsin School Nurse Demographics



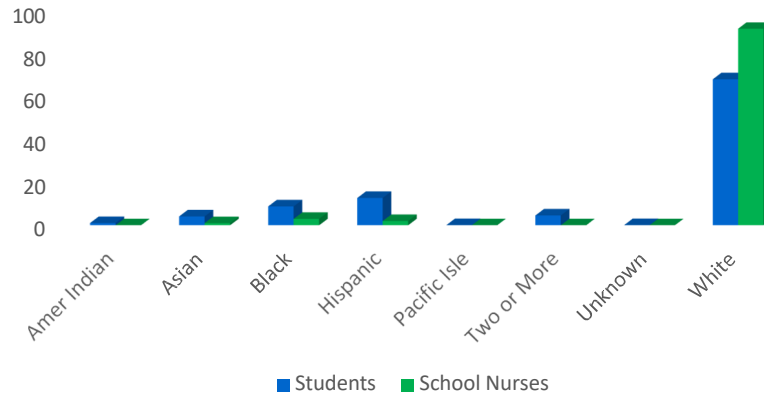
Source [Public All Staff Report](#)

Wisconsin Student Demographics



Source 2020/21 Certified Enrollment DPI

Student/School Nurse Race



2022/23 Survey

- <https://dpi.wi.gov/sspw/pupil-services/school-nurse/data>
- Survey open now!

The screenshot shows the Wisconsin Department of Public Instruction website. The navigation bar includes links for Home, Licensing, Families & Students, Schools & Educators, Libraries, and Data & Media. The main content area is titled "Data Collection" and features a section for "School Nurse Data Collection". The text in this section states: "The Wisconsin School Health Services Report survey is designed to collect annual school nursing and health services data from each school district in order to develop a cumulative".

2022/23 School Health Services Survey

- Bill for Medicaid Services
- Medical advisor
- Stock medications
- Albuterol
- Emergency epinephrine
- Opioid antagonist
- OTC analgesics
- Add or cut Nursing positions
- Medical Conditions
 - Life threatening allergies
 - Asthma
 - Diabetes T1
 - Diabetes T2
 - Seizure disorder
 - Myalgic encephalomyelitis/ chronic fatigue syndrome (ME/CFS)

2022/23 School Health Services Survey

Work Force

RN FTEs

- Direct services
- Special assignment
- Administrative/supervisory

LPN FTEs

- Direct services
- Special assignment

UAP FTEs

- Direct services
- Special assignment
- Administrative support

Direct services Responsible for the care of a defined group of students in addressing their acute and chronic health conditions. It includes case management, health screenings and health promotion activities. Direct services also include care provided by members of a health care team including LPNs or unlicensed assistive personnel

Special assignment Working with limited caseload providing direct services such as medically fragile students (1:1, 1:2, 1: 3, 1; 4 or 1:5).

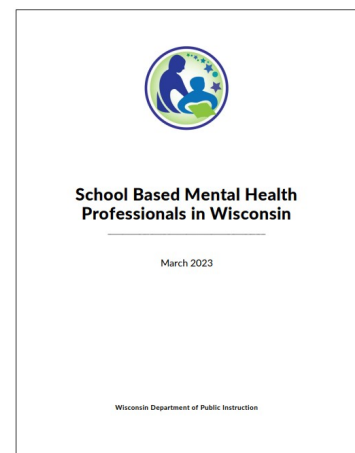
Administrative or Supervisory Providing management/clinical supervision to others/case management. UAP=health related clerical assistance

DPI Dates

- ❑ **Submit data for Statewide data collection by August 15, 2023.**
DPI webpage at <https://dpi.wi.gov/sspw/pupil-services/school-nurse/data>
- ❑ **School Nurse Summer Institute – YMHFA August 8, 2023, in Madison.**
Registration now open until July 14th.
- ❑ **New School Nurse Orientation October 24-25, 2023, Wisconsin Dells**

School Based Mental Health Professionals in Wisconsin

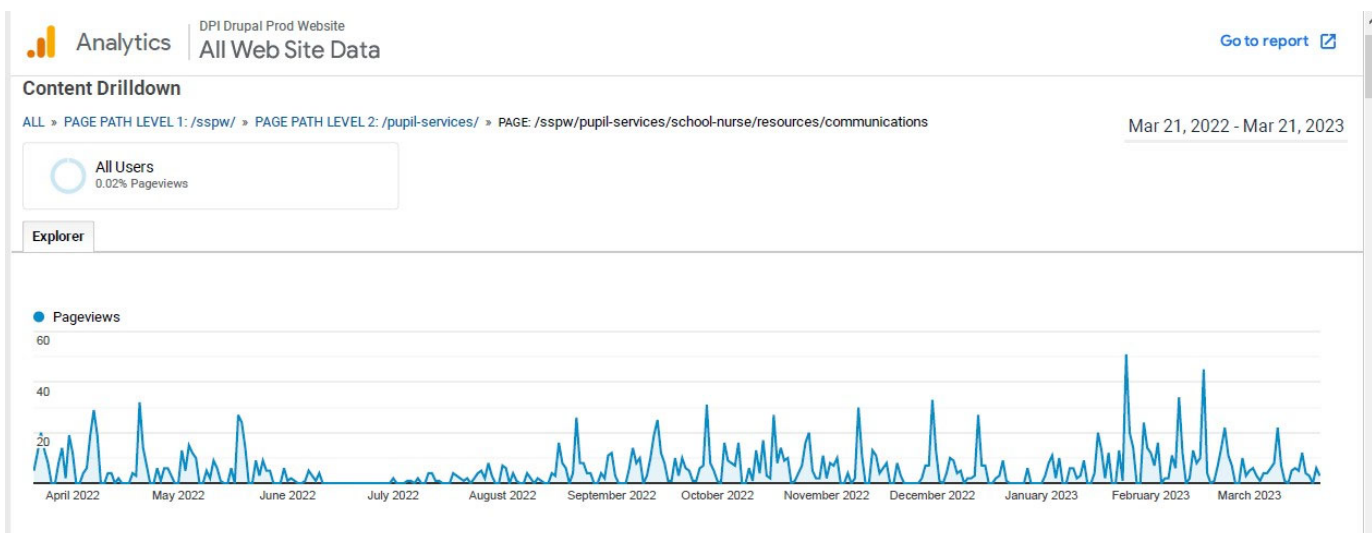
[This document](#) is intended to provide information to all stakeholders about roles, training, licensing, knowledge, and skills of School Counselors, School Nurses, School Psychologists, School Social Workers, and Credentialed Mental Health Providers. These professionals work collaboratively to meet the many needs of students and staff with their unique skills, training, and expertise through a team-based approach. School systems are best supported when school mental health professionals are employed in sufficient numbers and with a clear understanding of appropriate expectations for their roles.



What has kept me busy this year

Bi-monthly School Nurse Updates	Final COVID document August 2022. Module for Unlicensed staff regarding documentation	Monthly school nurse network meetings specific for new school nurses and DPI "office hours"	SCA educational document and other legislative responses
DiSH consultant and presenter	Presentations to various school nurse groups and virtual	Opioid Antagonist training reviews and resources	School Nurse Evaluation Rubric updated with 2022 standards
2022 Summer Institute (Records and COVID Debrief) and 2022 New School Nurse Orientation	WASN legislative and conference planning committees	Consult with DHS on Public Health Workforce grant	Long COVID, Medicaid Billing and DHS 144 presentations

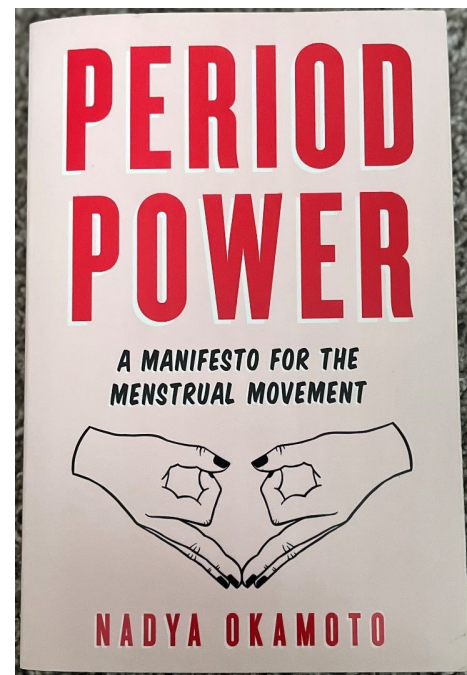
DPI School Nurse Update Views



DPI Future Projects

- School Nurse Summer Institute – YMHFA no NCPD offered this year**
- New School Nurse Orientation – October 24-25**
- Revision of BBP training module**
- School Nurse Handbook, new chapters on Special Education, Administration Issues and revise chapters on Immunization and Communicable Disease, Medication Administration, School Health Laws, and School Nursing (framework)**
- Training for school nurses on scopes and standards**

Will this get
traction in
Wisconsin?



What are and will be the driving forces of school health services in Wisconsin and beyond?



Driving forces



School nurses: An investment in student achievement

“Students enter school with a variety of mental and physical health needs, and school nurses are on the front line of addressing them.”



“Spending on school nurses ought to be viewed as an investment, not a cost.”

Citation: Maughan, E.D. (2018). School nurses: An investment in student achievement. Phi Delta Kappan 99 (7), 8-14.

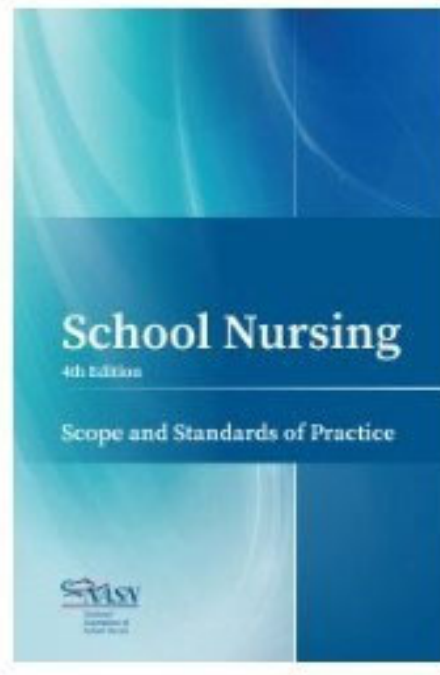
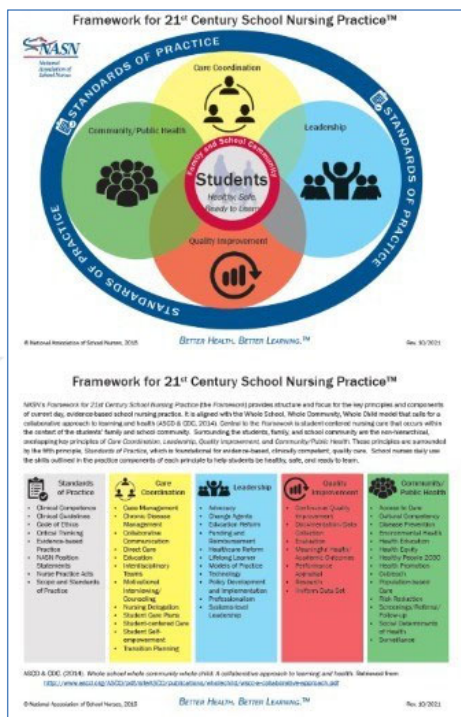
Student Health Services Staffing

*It is the position of the National Association of School Nurses (NASN) that all students should have **access to school nursing care by a registered, professional school nurse all day, every day.** For students who face barriers to accessing healthcare, especially those living in predominantly low-income, rural and minority communities, a school nurse may serve as their only regular healthcare provider. School nurses provide students, staff, and school communities with quality healthcare that is critical for health promotion, disease prevention, health maintenance, and health equity .*

NASN 2021



What will it take to get School Nurses to practice to their (YOUR) full scope of practice?



What will you be providing?....

Case Management

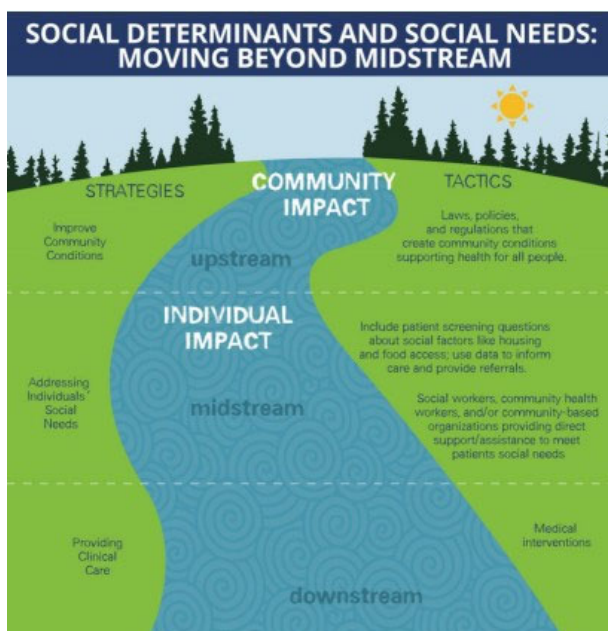
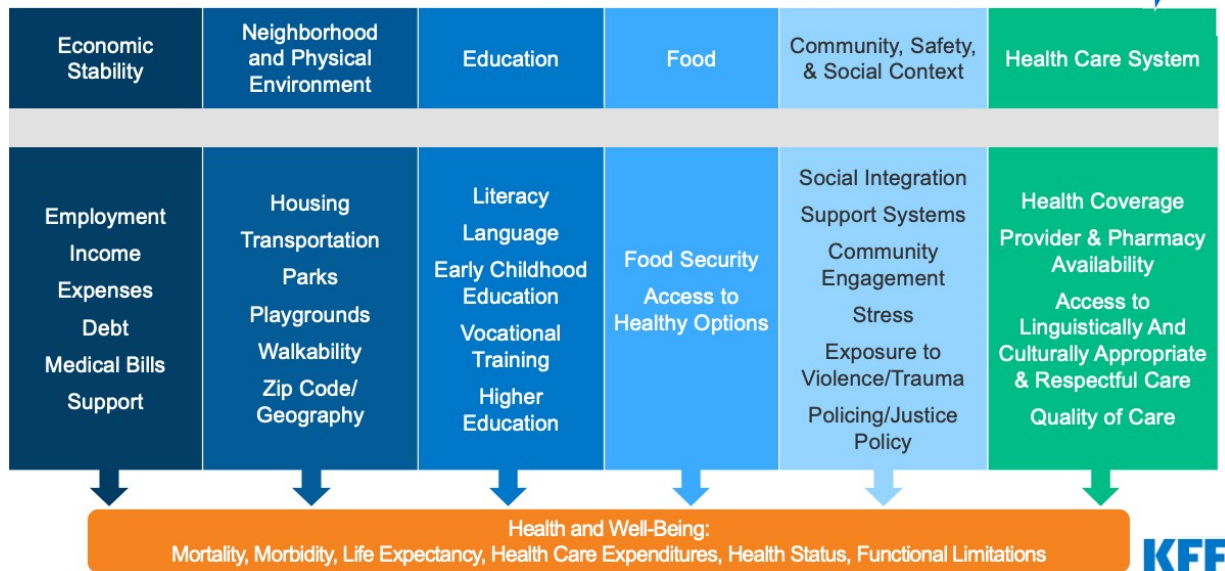


Care Coordination



Figure 1

Social Determinants of Health



Health Equity Moving Upstream

Health Affairs: Meeting Individual Social Needs Falls Short Of Addressing Social Determinants Of Health

<https://debeaumont.org/wp-content/uploads/2019/04/social-determinants-and-social-needs.pdf>



Medicaid billing for
school-based
mental and
behavioral health
services

[#13 DPI School
Nurse Update](#)
Practice Points
Embrace Your Role

Acute Mental Illness – (hearing voices, seeing visions, delusional thinking, excessive preoccupation with ideas or thoughts, odd or incomprehensible speech, self identification of major mental illness such as schizophrenia, bipolar or “manic depressive”)

Anxiety – (restlessness, agitation, insomnia, frequent frightening nightmares, flashbacks, intrusive thoughts, obsessive fears, excessive rumination, etc.)

Change in ability to care for self – (not eating, not bathing or changing clothes, etc.)

Communication changes – (lack of interest in communication with family and friends)

Conflicts with family or friends – (frequent fights or upset relationships, etc.)

Fatigue – Exhaustion – Insomnia - Need to R/O medical causes – (recent change in sleep patterns, sleep onset difficulty, etc.)

Physical / Somatic Complaints – Need to R/O medical causes - (complaints of pain or discomfort without identifiable physical basis after nursing assessment, frequent complaints of headache, gastrointestinal upset, etc.)



Celebrate!

National School Nurse Day May 10, 2023

[DPI Proclamation](#)



Stand up if you are a **RELENTLESS** School Nurse

Reference

Artiga, Samantha and Elizabeth Hinton. 2018. *Beyond Health Care: The Role of Social Determinants in Promoting Health and Health Equity*.

<https://www.kff.org/racial-equity-and-health-policy/issue-brief/beyond-health-care-the-role-of-social-determinants-in-promoting-health-and-health-equity/>

Kubik, Martha Y. and Erin D. Maughn. 2022. "The Mental Health of School-Aged Youth: A Call to Action for School Nursing" *Journal of School Nursing* 38 no. 5: 426-427. <https://doi.org/10.1177/10598405221113312>

Morse, Brenda. L. et. al. 2022. "U. S. School Nursing Job Analysis." *Journal of School Nursing* 38, no. 2: 126-137.

<https://journals.sagepub.com/doi/abs/10.1177/1059840520930075>

CONTACT INFORMATION

Louise Wilson, MS, BSN, RN, LSN, NCSN

School Nursing and Health Services Consultant

WI Department of Public Instruction

louise.wilson@dpi.wi.gov

608-266-8857

